



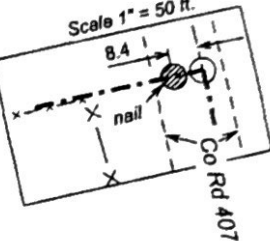
I hereby certify that this property was surveyed on the ground
under my direction and supervision on June 7, 2017.

Tommy Joe Higgins 6/15/17
Tommy Joe Higgins Date
RPLS No. 2805, 1041 NW 5th Street, Hamlin Texas

section 12
Co Rd 446

Bearings based on WGS84 at
a latitude of 32°32'46.74210" and
a longitude of 100°6'33.99217"

Scale 1" = 50 ft.



just N of fence corner

2613.0 N77°39'29"E

pond

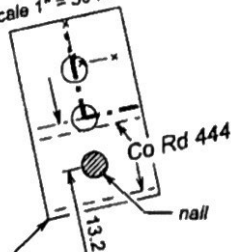
Section 17, Block 19, T&P Ry Co Lands, Jones County, Texas

117.71 acres
See Volume 126,
Page 616 OPR

cultivation

pasture

Scale 1" = 50 ft.



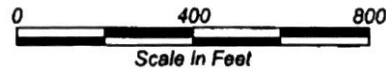
FM 1085

2660.6
S77°39'29"W

section 25

2608.3 S77°39'29"W
County Road 444

Scale 1" = 400 ft.



County Road 407

section 17

section 16

5269.9

N77°39'29"E
nail & washer
section 19

capped rebar
section 18

LEGEND

- boundary line
- recovered monument
- set 1/2" capped rebar

Jones County, Texas